



SoftChalk™ LessonBuilder 3

Installation Guide

Updated February, 2006

Table of Contents

Overview.....	1
System Requirements	2
Installing SoftChalk™ LessonBuilder 3 on Windows systems	3
Install LessonBuilder 3	3
Run LessonBuilder	5
Enter the License Key	6
Uninstall LessonBuilder.....	6
Installing SoftChalk LessonBuilder on Mac OSX	7
Install LessonBuilder 3	7
Restarting LessonBuilder 3	7
Enter the License Key	8
What is Java Web Start?	9
Need Assistance?	9
COPYRIGHT Information	9

Table of Figures

Figure 1 LessonBuilder Install Dialog 1	3
Figure 2 LessonBuilder Install Dialog 2	3
Figure 3 LessonBuilder Install Dialog 3	4
Figure 4 LessonBuilder Install Dialog 4	4
Figure 5 LessonBuilder Install Dialog 5	5

Overview

SoftChalk™ LessonBuilder is a powerful web lesson editor that lets you easily create engaging, interactive web lessons for your e-learning classroom.

LessonBuilder allows you to create and edit content as if working in a word processor. You can perform basic text editing, such as adding bold, italic, colored text, bullets, tables and hyperlinks to your lesson document. In addition, in-line comprehension questions can be easily added to your lesson. Pop-up annotations and notes are easy to create, as are simple, interactive games.

With LessonBuilder's built-in style properties function, you can choose from over 65 style designs. With the click of a button, LessonBuilder will generate a set of integrated lesson pages, with built-in navigation and a professionally designed layout. LessonBuilder supports the creation of multi-page lessons, with automatically generated inter- and intra- page navigation, as well as a table of contents.

LessonBuilder lessons are created in standard HTML format. Your students will be able to view your LessonBuilder lessons in any standard web browser.

When you're finished creating your lesson, use LessonBuilder's "Package" feature to automatically package your lesson files into a zip file that can be easily imported into most Learning Management Systems (LMS), such as Blackboard and WebCT. You may also package your lesson in a SCORM (1.2 or 2004) format for import into any SCORM-compliant LMS. Or, simply distribute your lesson by copying the lesson folder to a CD, a file server, or a web server.

The next sections describe in detail how to install LessonBuilder 3. If you have questions, problems, or comments, please contact: help@softchalk.com

System Requirements

SoftChalk LessonBuilder may be installed on Windows computers (Win 98, ME, 2000, XP), or on Macintosh OSX. Below are the system requirements for SoftChalk LessonBuilder:

- **Authoring (Instructor)**
 - Windows 98, ME, 2000, XP
 - Supported Web Browser, including IE 5.5 or above, Netscape 6.x or above, Mozilla/Firefox
 - Java Runtime 1.5.x or above
 - Flash Player 8 or higher
 - Macintosh OS X
 - Supported Web Browser, including Apple Safari 1.x or higher
 - Flash Player 8 or higher
- **Student**
 - Windows 98, ME, 2000, XP
 - Supported Web Browser, including IE 5.5 or above, Netscape 6.x or above, Mozilla/Firefox
 - Flash Player 8 or higher
 - Macintosh 9.x or OS X
 - Supported Web Browser, including Apple Safari 1.x or higher
 - Flash Player 8 or higher

Installing SoftChalk™ LessonBuilder 3 on Windows systems

The following sections provide information about installing SoftChalk LessonBuilder 3 on Microsoft™ Windows computers.

LessonBuilder is a Java Web Start application. The Sun™ Java JRE (java runtime environment) version 1.5 or higher is required for the installation of LessonBuilder. The LessonBuilder installer will install or upgrade the Java JRE as part of the LessonBuilder installation process. For more information about Java Web Start, please see the section below titled “What is Java Web Start”.

Install LessonBuilder 3

To complete the installation of LessonBuilder 3, copy the file “LB3Plus.exe” onto your local computer and run it. You will see a dialog:

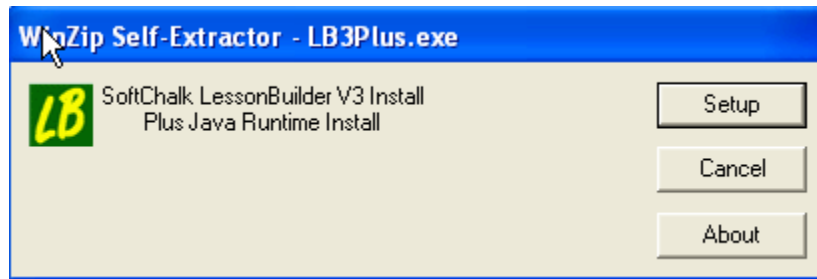


Figure 1 LessonBuilder Install Dialog 1

Click the **Setup** button to begin the install.

At the next dialog:



Figure 2 LessonBuilder Install Dialog 2

Click the **Install** button to continue.

If you do not currently have Java JRE 1.5 or higher installed on your computer, the LessonBuilder installer will install or update Java JRE.

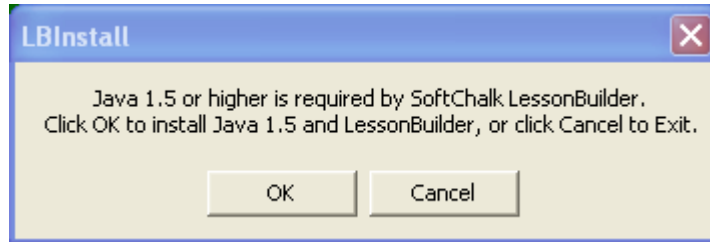


Figure 3 LessonBuilder Install Dialog 3

If you already have Java JRE 1.5 installed on your computer, LessonBuilder will skip the Java JRE installation process.

During the Java JRE installation process, you will be asked to accept the Java JRE license agreement.

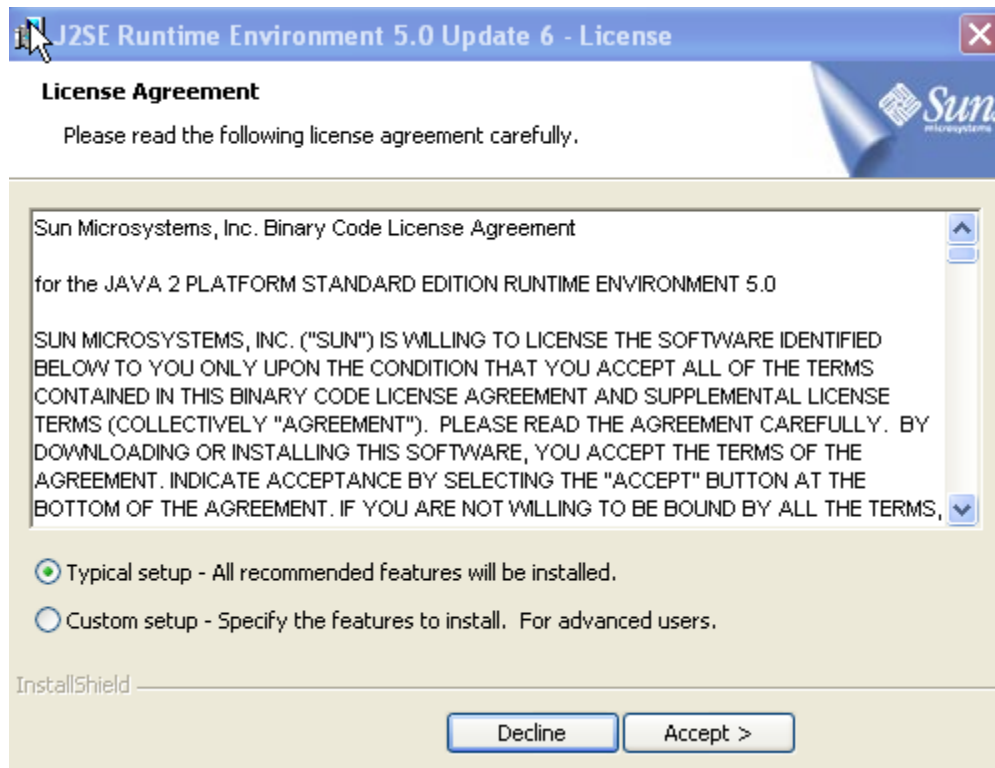


Figure 4 LessonBuilder Install Dialog 4

Java JRE is a **free** program and SoftChalk is allowed to distribute it as part of the SoftChalk LessonBuilder installer. You may also choose a **Typical** setup or a **Custom** setup for Java JRE. We suggest that you choose the **Typical**. The standard install of Java JRE will install Java JRE on the C: drive of your computer. If you wish to install the Java JRE in another location on your computer, please choose the **Custom** install. Click the **Accept** button on the dialog to continue the Java JRE installation.

At the end of the Java JRE installation process, you may need to restart your system, and will be given an option to restart it now or later. Choose the **later** option so that you can continue to complete the LessonBuilder installation prior to restarting your system. (Note that you may **not** see this option, in which case you will not need to restart your system.)

After completing the installation of Java JRE, or if you already had Java JRE installed, you will see the LessonBuilder Install Options dialog:

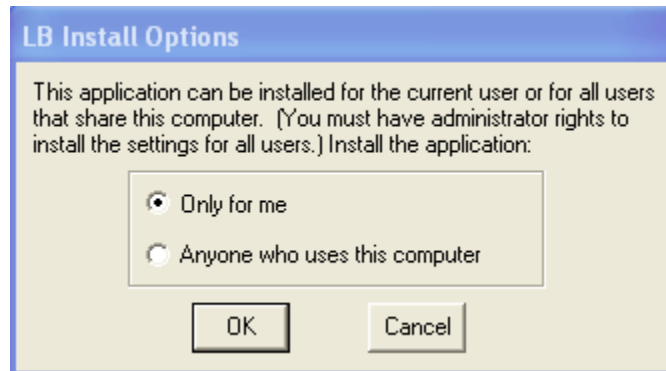


Figure 5 LessonBuilder Install Dialog 5

You may choose to install SoftChalk LessonBuilder for only the current user, or (if you are on a Windows XP or Windows 2000 system) you may choose to install for all user accounts on the computer. If you choose to install for all user accounts, you must be logged in as an administrator on your computer to successfully complete the installation.

Make your selection and click the **OK** button. This will complete the installation of SoftChalk LessonBuilder. You should see a message indicating that the installation was completed.

Run LessonBuilder

After a successful installation of LessonBuilder, you will find a shortcut for LessonBuilder 3 on your desktop. You will also be able to start LessonBuilder by clicking the Windows “Start” button, choosing “All Programs”, and locating “SoftChalk” in the list of programs.

LessonBuilder runs on your desktop computer and does not require network access for use. If you are online when you start LessonBuilder, it will automatically download any updates to the software, each time you start the program. If you are offline when you start LessonBuilder, it will not check for updates and will simply start the program.

Enter the License Key

After installing LessonBuilder, you may need to enter a license key to use LessonBuilder. To enter your license key, from the “Help” menu, choose “Enter License Key”. Either copy and paste, or type your license key information into the dialog window. If you are using the 30-day free trial version of LessonBuilder, it will run for 30 days from the day you install it without a license key. After 30 days have passed, you will need a license key to use LessonBuilder.

Uninstall LessonBuilder

To uninstall LessonBuilder:

1. Open the Windows “Control Panel”.
2. Double-click, “Add/Remove Programs”.
3. Locate the “LessonBuilder V3” entry and click to highlight. Then, click the “Change/Remove” button. This will uninstall LessonBuilder from your computer.
4. If you wish to also remove the Java JRE from your computer, locate the “J2SE Runtime Environment” entry and click to highlight. Then, click the “Change/Remove” button. This will uninstall Java JRE and Java Web Start from your computer.

Installing SoftChalk LessonBuilder 3 on Mac OSX

The following section provides information about installing SoftChalk LessonBuilder 3 on Macintosh™ OSX.

LessonBuilder is a Java Web Start application. The Sun™ Java JRE (java runtime environment) is required for the installation of LessonBuilder, and is already included in the operating system of Mac OSX computers. For more information about Java Web Start, please see the section below titled “What is Java Web Start”.

Install LessonBuilder 3

To install LessonBuilder on a Mac OSX system, you **must be online**. Open a web browser and point your web browser to the location:

<http://www.softchalk.com/Lb3Distribution/LBuilderV3.jnlp>

(Hint: copy and paste the url above into the **location** dialog of your web browser.)

LessonBuilder will download and install. Upon completion of the download and install, LessonBuilder will launch automatically. Then you may close your web browser.

When the download is completed, Java Web Start will ask “**This application is requesting unrestricted access to your local machine and network. Do you want to install and run SoftChalk LessonBuilder?**” Click the **Start** button to indicate that you wish to trust and start the application.

Next, Java Web Start will ask “**Would you like to create an application for it?**” Click the **Create** button to add the LessonBuilder 3 application to your desktop.

Run LessonBuilder 3

Use the LessonBuilder desktop shortcut (created in the step above) to start/restart LessonBuilder.

If you did not create a desktop shortcut for LessonBuilder, open Java Web Start (located in Applications/Utilities/Java). Then choose **View, Downloaded Applications**, and then double-click **Start LessonBuilder**.

Enter the License Key

After installing LessonBuilder, you may need to enter a license key to use LessonBuilder. To enter your license key, from the “Help” menu, choose “Enter License Key”. Either copy and paste, or type your license key information into the dialog window. If you are using the 30-day free trial version of LessonBuilder, it will run for 30 days from the day you install it without a license key. After 30 days have passed, you will need a license key to use LessonBuilder.

What is Java Web Start?

Java Web Start is included in the Java Runtime Environment (JRE). The Java JRE is installed as part of the installation process for SoftChalk LessonBuilder (on Windows computers), and is included already included in the Macintosh OSX operating system.

Java Web Start assists in the installation of LessonBuilder, but more importantly, it allows the SoftChalk LessonBuilder application to receive automatic updates to LessonBuilder if you are online when you start LessonBuilder. We continually make improvements to LessonBuilder. Web Start will keep you current with the latest features and updates.

Note that to receive automatic updates, if you have firewall software installed on your computer, your firewall must let Web Start have access to the Softchalk website (www.softchalk.com).

Need Assistance?

If you have any problems, questions, or comments regarding installation or use of SoftChalk LessonBuilder, please contact us at help@softchalk.com , or visit the web site at <http://www.softchalk.com>

Thank you for your support! We hope you enjoy using SoftChalk LessonBuilder!

COPYRIGHT Information

SoftChalk LessonBuilder 3
Copyright © 2002 2003 2004 2005 2006 SoftChalk LLC
All Rights Reserved.

=====

<http://www.softchalk.com>
team@softchalk.com